

Tempo di Let It Go ♩ = 137
HANS & TOWNSPEOPLE:

53 54

Isles! _____

Isles! _____

WESELTON: "Fools. Let them follow the boy to their own doom, while we prepare for the Queen. When we find her, we will put her in her place. It shouldn't be too hard. After all,"

4

55-58

WESELTON (cont'd): "she is only one small girl." [GO ON]
Vamp (out any bar)

2 6 (ELSA enters) A tempo

59-60 64-69 70 71

[Segue as one]

LET IT GO

11

[SEGUE AS ONE from #10B]

Tempo ♩ = 137

7 8 ELSA:

1-7 The

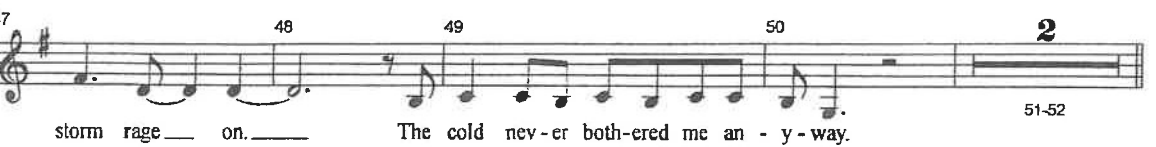
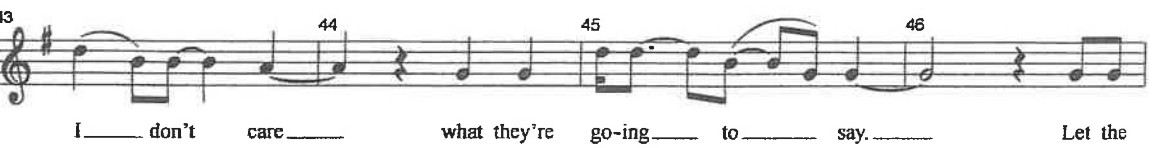
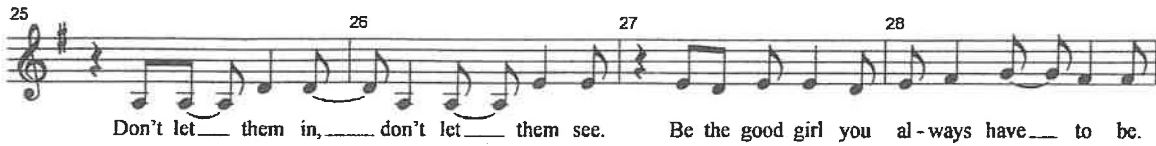
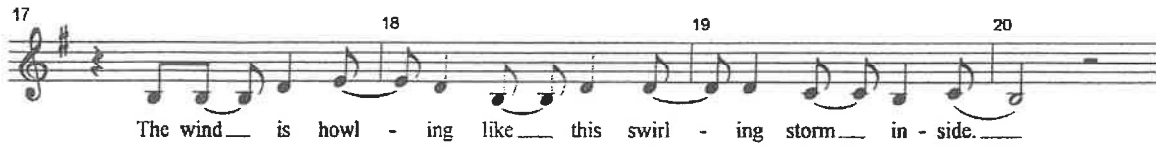
9 10 11 12

snow glows white on the moun-tain to-night, not a foot-print _____ to be seen. _____ A

13 14 15 16

king-dom of i - so - la - tion, and it looks like _____ I'm the queen.

#11 - Let It Go



#11 - Let It Go